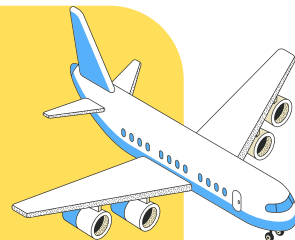


Arrival Guide for International Students

Necessary documents for your arrival in France

- ID card
- Passport
- Visa
- Proof of civil status (Birth Certificate)
- Address in France



Student services

Register on <https://messervices.etudiant.gouv.fr/enregistrement>

Required documents :

- Passport
- Email address
- Phone number

CVEC (Student Life and Campus Contribution)

Paying the CVEC is mandatory for studying in France.

Go to https://cvec.etudiant.gouv.fr/?_locale=en

Go to « Pay online » or « Pay in cash »

Follow the instructions

You should receive a **CVEC payment certificate**

Validating your residence permit

After your arrival, you need to validate your residence permit on <https://administration-etrangers-en-france.interieur.gouv.fr/particuliers/#/>

Required documents :

- Visa
- French address
- Date of arrival in France
- Email address



Registering to Social Security

Registering to the french Social Security system is free and mandatory.

Register on <https://etudiant-etranger.ameli.fr/#/>

Required documents :

- Visa
- ID
- Proof of civil status (Birth Certificate)
- Residence permit
- Proof of IUT enrollment (certificate of enrollment, pre-enrollment certificate)
- RIB (Bank account details)

Opening a bank account



To facilitate your bank account opening, IUT de Sceaux has a partnership with Société Générale. A bank account opening will be organised at your arrival.

Required documents :

- Passport
- Proof of IUT enrollment (certificate of enrollment, pre-enrollment certificate)
- Proof of Address (rental contract, home insurance, rent receipt, CAF statement)
- If you are hosted: a copy of the host's ID card + a document to be filled out by the host



Insurance

In France, it is mandatory to subscribe to a **home insurance** and a **personal liability insurance**. There is a lot of different insurance companies, including :

- ADH (student insurance) : 21€ a month for home insurance, 125€ a month for health insurance and personal liability insurance
<https://www.assurances-etudiants.com/en/>
- Société générale (or other bank) : you can subscribe to a home insurance and a personal liability insurance with your bank

Public Transports

Required documents :



- ID Photo
- Proof of IUT enrollment (certificate of enrollment, pre-enrollment certificate)

Imagine R Student Ticket :

By being enrolled at IUT, you can subscribe to the Imagine R Student Ticket, which allows you to use all public transport in Ile-de-France, for 382,40€ a year.

Go to <https://www.iledefrance-mobilites.fr/en/tickets-fares/detail/Imagine-R-student-ticket>

- Click on "Subscribe online"
- Create an account
- Click on "Subscribe to a new ticket"
- Select the Imagine R Student Ticket
- Click on "No"
- Click on "Subscribe now"
- Enter your personal information and upload an ID photo
- Enter the IUT's information (92330 Sceaux, IUT de Sceaux, 8 avenue Cauchy)
- Upload your enrollment certificate
- Enter your payment informations

You can order your Navigo card at your address, or pick it up at a point of sale (Point of sale map : <https://www.iledefrance-mobilites.fr/cartes/points-de-vente> ; Point of sale closest to the IUT : Stardust, 151 Rue Houdan)



Housing benefit

You can get housing benefit by creating an account on <https://caf.fr/>

Go to Mes Démarches - Logement

Required documents :

- Proof of Address
- RIB (Bank account details)

IZLY (Campus restaurant)



An IZLY account allows you to pay in CROUS restaurants and cafeterias

After registering on [messervices.etudiant](https://messervices.etudiant.fr/), you will get an email to activate your IZLY account

Download the IZLY app on [Appstore](https://www.apple.com/appstore) or [GooglePlay](https://play.google.com/store/apps/details?id=com.crous.izly)

Top up your account in the app with a credit card

Pay with the QR code

Cell Phone Plan



Required documents :

- Passport
- RIB (Bank account details)
- Proof of Address
- Email address

Main operators in France :

Free :

- 2€/month plan: 50Mo, 2h Calls, unlimited SMS in Europe
- 10.99€/month plan : 14Go, unlimited Calls/SMS in Europe
- 19.99€/month plan : 350Go, unlimited Calls/SMS in Europe and to China

SFR :

- 5,99€/month plan : 1Go, 2h Calls/SMS in Europe
- 15,99€/month plan : 5Go, unlimited Calls/SMS in Europe
- 25,99€/month plan : 250Go, unlimited Calls/SMS in Europe and to China

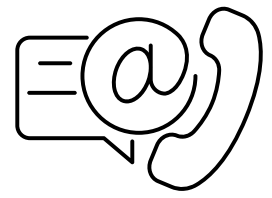
Orange :

- 17.99€/month plan : 20Go, unlimited Calls/SMS in Europe
- 19.99€/month plan (Under 26) : 120 Go, unlimited Calls/SMS in Europe

Bouygues :

- 2€/month plan : 2Go, unlimited Calls/SMS in Europe
- 7.99€/month plan : 20Go, unlimited Calls/SMS in Europe
- 3.99€/month plan : 150Go, unlimited Calls/SMS in Europe

Contacts



Bureau des Relations Internationales (International Relations Office)

Bureau 311 in IUT de Sceaux

Contact : lea.rivera@universite-paris-saclay.fr

Service de Scolarité (Academic Services Office)

Bureau 309 in IUT de Sceaux

Contact : 01 40 91 24 40 / 24 19

scolarite.iut-sceaux@universite-paris-saclay.fr

GATE :

The Foreign Talent Welcome Desk is a service at the Paris-Saclay University, to assist you with your administrative procedures (Crous, CAF, health insurance, residence permit, bank, etc.). It is open from August to December, and you can make an appointment online via this link:

<https://www.smartagenda.fr/pro/gate-paris-saclay/rendez-vous/?langue=en>

You can also contact them at internationalwelcomedesk.upsaclay@centralesupelec.fr, event after December. They can assist you with visa procedures, residence permits, social security, CAF, as well as integration programs and events specifically organized for international students.